



STEF CALLAGHAN &  
GEORGE CALLAGHAN  
the kenny gallery 2004

*You are invited to the opening of*  
**High Ways & Byways**  
*An exhibition of New Paintings by*

**STEF CALLAGHAN &  
GEORGE CALLAGHAN**

*in  
The Kenny Gallery, Middle Street, Galway  
on  
Friday 23rd April 2004, at 6:00 for 6:30pm*

*This exhibition will be officially opened  
And musically graced by  
Janet Harbison  
Director, Irish Harp Centre, Castleconnell*

**S**tef was born in Malaysia. One of five children, she now has five children. She has travelled extensively, worked as a teacher, a flower farmer, a librarian. She currently runs a studio and Art Gallery, a monthly concert venue, a café and wine bar at each concert, and she will tell you that music, art, farming, cooking, travel, coffee and daughters dominate her life.

Her paintings are idyllic, and while they reflect a joy in everyday life, and explore the interactions between people as they go about their daily pursuits, there is no attempt at reality in her work. Her clear cartoon colours and resolved compositions compliment the pure fantasy of her well-drawn subjects. Voluptuous Ladies are depicted at work and play in bright perky landscapes to suggest a perfect sisterhood. They delight the eye. They make you smile.

**G**eorge was born in Belfast in 1941. He left school at fourteen, studied painting and lithography at Belfast College of Art, and was educated in the real world.

He is a Renaissance Man, and worked as a design consultant, not only developing advertising concepts, but also designing packaging and even composing and singing the jingles. He has a reputation as a jeweller, a sculptor, a cartoonist, a harpist, a singer, a maker of harps, a busker, a maker of batiks, a lithographer, and of course, a painter. He has long since left the world of advertising to pursue a career as an artist.

He focuses on making people aware of what is around them. His painting has been described variously as naïve, full of nostalgia and childhood memories, cryptic visuals, fun pieces. He has held countless exhibitions since 1962, and his work has been shown and collected all over the world. He is one of Ireland's leading visual artists.

We think of George and Stef Callaghan as a unit. To meet them is to meet two happy contented people. They are both multi-talented, in love with life, modest, full of fun. This *joie de vivre* is reflected in their paintings. This is their first major exhibition in Galway, and the first time they have exhibited together.

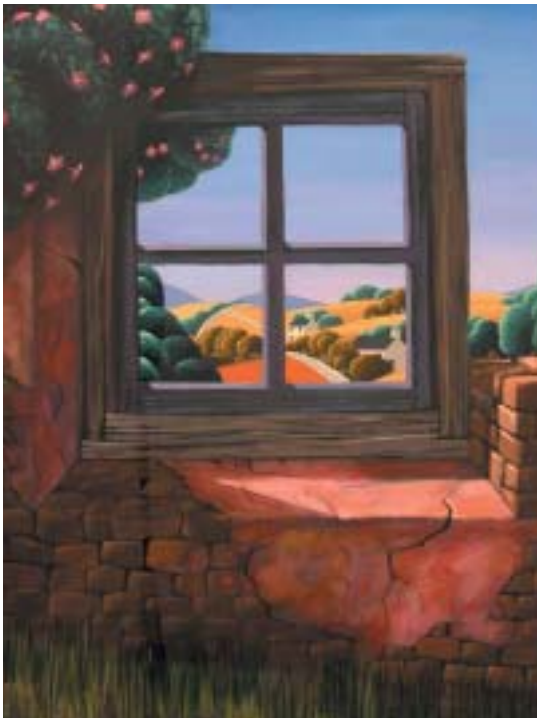
**Tom Kenny, April 2004.**



5 **Girl with Geese** Acrylic on Canvas 18x22in



4 **Pool Players** (detail) Acrylic on Canvas 16x16in



24 **Morning Window** Acrylic on Canvas 20x16in



22 **Doorway** Acrylic on Canvas 20x16in

# High Ways & Byways

*An exhibition of New Paintings by*

STEF CALLAGHAN & GEORGE CALLAGHAN

The Kenny Gallery 2004

No.	Title	Medium	Size
<b>STEF CALLAGHAN:</b>			
1	<b>The Picnic</b>	Acrylic on Canvas	18x22in
2	<b>Spanish Lady</b>	Acrylic on Canvas	18x20in
3	<b>Cooking Day</b>	Acrylic on Canvas	18x18in
4	<b>Pool Players</b>	Acrylic on Canvas	16x16in
5	<b>Girl with Geese</b>	Acrylic on Canvas	18x22in
6	<b>Dulse Gatherers</b>	Acrylic on Canvas	18x18in
7	<b>Baking Lesson</b>	Acrylic on Canvas	18x18in
8	<b>Baking Day</b>	Acrylic on Canvas	16x20in
9	<b>Lavender Gatherers</b>	Acrylic on Canvas	18x18in
10	<b>Washing Day</b>	Acrylic on Canvas	20x20in
11	<b>Coffee Morning</b>	Acrylic on Canvas	16x20in
12	<b>Thatcher</b>	Acrylic on Canvas	16x20in
<b>GEORGE CALLAGHAN:</b>			
13	<b>Barely Worn</b>	Acrylic on Canvas	16x24in
14	<b>Kitchen Window</b>	Acrylic on Canvas	18x24in
15	<b>Window, Sligo</b>	Acrylic on Canvas	18x24in
16	<b>Morning Glow</b>	Acrylic on Canvas	18x24in
17	<b>Fishing Boats Evening</b>	Acrylic on Canvas	14x28in
18	<b>Into the West</b>	Acrylic on Canvas	14x28in
19	<b>Chimney, Window &amp; Doorway</b>	Acrylic on Canvas	20x24in
20	<b>Cortona, Italy</b>	Acrylic on Canvas	24x16in
21	<b>Window to Window</b>	Acrylic on Canvas	20x16in
22	<b>Doorway</b>	Acrylic on Canvas	20x16in
23	<b>West Coast Harbour</b>	Acrylic on Canvas	16x20in
24	<b>Morning Window</b>	Acrylic on Canvas	20x16in
25	<b>Edge of the Forest</b>	Acrylic on Canvas	14x28in
26	<b>Morning Glory with Doorway</b>	Acrylic on Canvas	24x16in
27	<b>In the Mournes</b>	Acrylic on Canvas	18x18in
28	<b>Ruins with Window</b>	Acrylic on Canvas	20x16in
29	<b>Edge of the Woods</b>	Acrylic on Canvas	14x28in
30	<b>Our Old House</b>	Acrylic on Canvas	20x24in
31	<b>Chimney</b>	Acrylic on Canvas	20x24in
32	<b>Our Door Step</b>	Acrylic on Canvas	16x24in
33	<b>Sunlight Morning</b>	Acrylic on Canvas	16x20in
34	<b>Hills of Connemara</b>	Acrylic on Canvas	30x24in

\*all works are now available for sale

\*dimensions are in inches excluding frame

\*all works may be viewed on [www.kennys.ie](http://www.kennys.ie)

## Cover Images

- 30 **Our Old House** Acrylic on Canvas 20x24in
- 2 **Spanish Lady** Acrylic on Canvas 18x20in
- 27 **In the Mournes** Acrylic on Canvas 18x18in
- 20 **Cortona, Italy** Acrylic on Canvas 24x16in
- 25 **Edge of the Forest** Acrylic on Canvas 14x28in
- 18 **Into the West** Acrylic on Canvas 14x28in
- 3 **Cooking Day** Acrylic on Canvas 18x18in
- 32 **Our Door Step** Acrylic on Canvas 16x24in





3 **Cooking Day** Acrylic on Canvas 18x18in



19 **Chimney, Window & Doorway** Acrylic on Canvas 20x24in



## STEF CALLAGHAN

- Born in Malaysia in 1954, one of five children.
- Married with five children.
- Extensive travel experience as a child and as an adult. Worked as a teacher's aide whilst living in Hamilton, Tasmania. Moved to Bruny Island and ran an 800 acre farm in a partnership. Moved to a smaller flower farm and marketed our produce at the weekly markets and through florists. Lived and worked on a narrow boat on the canals of England for one year acting as a home educator for my daughter.
- Studied Art at the Hobart, Tasmania, Australia.
- Matriculation College. Continued painting studies privately.

### Exhibitions:

Palm Beach Gallery, Sydney.  
Bowerbank Mill, Deloraine.  
Handmark Galley, Hobart.  
Art Expo, Freemantle, W.A  
Mackenzie Gallery, Perth, W.A.  
Kennys Gallery, Galway, Ireland

- Work is in numerous private collections throughout Australia and overseas.
- Currently runs a Studio and Art Gallery.
- Produces gift cards of original paintings for sale.
- Runs a monthly musical concert venue, producing posters for promotion.
- Worked in collaboration with husband, George Callaghan, on a compact disc of Ethnic lullabies that were collected from around Tasmania and edited and produced in a recording studio. Produced the Artwork and the booklet for the CD.





## GEORGE CALLAGHAN

George Callaghan was born in County Antrim, Northern Ireland in 1941, attending Carr's Glen Primary School up the Old Park Road. At the age of four his family relocated to South Africa. He became the Western Province Boxing Champion (Gnat weight division). At the age of 14 the impending death of his Grandfather forced the family to return to Belfast.

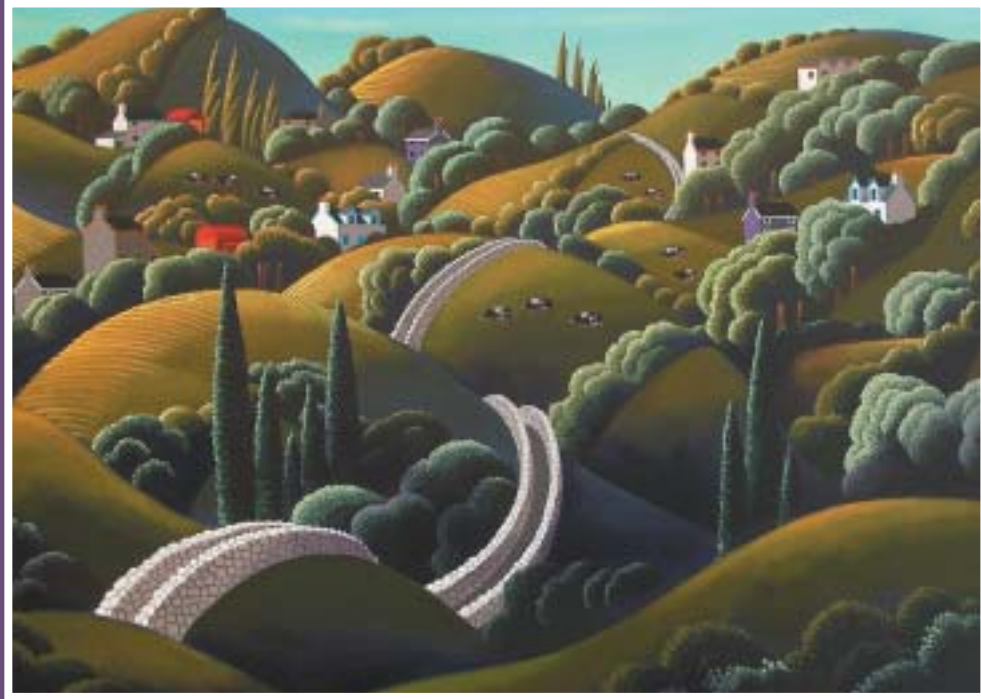
George attended Ashfield Secondary Intermediate. He left school at 15 to work at Nicholson and Bass (printers and box makers, Alfred Street) as an apprentice Commercial Artist. A year later he commenced studying Art at the Belfast College of Art on a Scholarship. George started work in Dublin as a junior designer with Janus Advertising Agency and 8 months later moved to

Kennys Advertising Agency as a senior designer. He then moved to London as a designer. Eight months later he emigrated to Sydney, Australia. For a year he worked as a senior designer at McCann Erickson then moved to Leo Burnett's where he stayed for the next 11 years as an Art Director. At the age of 32 he then moved to the Australian island state of Tasmania where he has lived for the last 27 years. In this time he has been recognized as one of the States leading Artists. He also enjoys the reputation of being Australia's leading Harp maker and a leading exponent of the Celtic Harp. The recordings of his harp music include two compact discs, "Traditional Airs", "Rhyme and Reason" along with several cassettes.

### Exhibitions:

1962	Cema Art Gallery	Belfast	1986	Bower Bank Mill	Tasmania
1963	Grafton Gallery	Dublin	1989	Swan Gallery, Cygnet	Tasmania
1963	I.C.A. Gallery	Dublin	1990	Strickland Gallery	Tasmania
1964	Highgate Gallery	London	1990	Strickland Gallery	Tasmania
1965	Highgate Gallery	London	1991	Strickland Gallery	Tasmania
1966	Aladdin Gallery	Sydney	1991	Crohill Gallery	Canberra
1968	Blaxland Galleries	Sydney	1992	Salamanca Collection	Tasmania
1969	Contemporary Art Society	Sydney	1994	The Kenny Gallery	Galway
1970	Saddlers Court	Tasmania	1995	Bower Bank Mill	Tasmania
1971	Saddlers Court	Tasmania	1996	Liberator Gallery	Adelaide
1972	Charlie Miller Gallery	Tasmania	1996	Cavehill Gallery	Belfast
1972	Saddlers Court	Tasmania	1996	Cork Art Society	Cork
1973	Hamilton Gallery	Tasmania	1996	The Kenny Gallery	Galway
1974	Saddlers Court	Tasmania	1996	Salamanca Collection	Tasmania
1975	Saddlers Court	Tasmania	1996	Palm Beach Gallery	Sydney
1977	Saddlers Court	Tasmania	1997	Red Chapel Gallery	Hobart
1978	Saddlers Court	Tasmania	2001	Eakin Gallery	Belfast
1979	Hamilton Gallery	Tasmania	2002	Eakin Gallery	Belfast





34 Hills of Connemara Acrylic on Canvas 30x24in



16 Morning Glow Acrylic on Canvas 18x24in

## THE KENNY GALLERY

Middle Street, Galway, Ireland.

Tel: +353 91 534760 Fax: +353 91 568544

Email: [art@kennys.ie](mailto:art@kennys.ie)

Opening Hours: Monday to Saturday 9am - 6pm

Kennys on the Web: [www.kennys.ie](http://www.kennys.ie)

