

## Simon Knowles

### Artists Statement



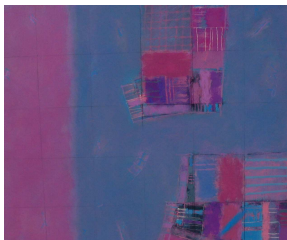
*Still Blue World III.*  
2002-2003. Oil and oil  
pastel on canvas. 150  
x 100cm price €2.250

Most of these works are based around Cork Harbour. I first started painting Cork Harbour in the late 1990's. This first series of small works on paper gave rise to a second body of abstract work titled *Still Blue World*. A recent commission brought me back to the harbour and a renewed interest in its rapidly changing and visually ephemeral qualities.

Alongside these paintings of my immediate locale are a series of works titled *Europa*. Europa is the name of one of Jupiter's moons, but like the rather unspecific use of the word 'Harbour' this word might also refer to Europe or to some aspect of Europe. To underline this possibility visual elements taken from the *Harbour* series are incorporated into these canvases. Like the *Harbour* series, these paintings offer a kind of map to a place that can only be visited through the work.



*Europa Harbour. No 1* 2004. Oil  
and oil pastel on gesso panel. 110  
x 75. Price €1,950

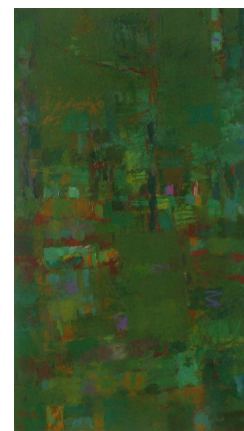


*Mapland no 2.* 2001.  
Mixed Media on wood. 60  
x 60cm. €1,125

Over the years much of my work has been concerned with maps and with the language of signs and symbols that maps use to describe the landscape, a process of representation that is not that dissimilar to painting. This idea was further developed in a series of work I painted in the period 2000 to 2003 titled *Mapland*.

Alongside this work, primarily made in the studio I also produce work made outside, responding directly to the natural world. Over the years I have made work in various places, here in Ireland and abroad. In these works I try to hold a line between the figurative and the abstract, between a world that is recognizable as a certain place, such as the Forests around Fontainebleau, and a world that exists, much like the map, only in itself.

*Simon Knowles August 2005*



*Fontainebleau Forest  
no 1.* 2002. Acrylic and  
oil pastel on paper. 46  
x 25cm. €700